

验证报告

No. SHAEC2104523002

日期: 2021年04月08日 第1页,共11页

上海庆科信息技术有限公司
上海市普陀区金沙江路2145弄5号9楼

样品名称: EMC3280
SGS工作编号: SP21-006713 - SH
测试基本型号: EMC3280
客户参考信息: EMC3280-P, EMC3280-E
样品接收日期: 2021年03月17日
验证周期: 2021年03月17日 - 2021年03月31日
验证要求: 参考欧盟RoHS指令2011/65/EU的修正指令(EU) 2015/863。
验证方法: 请参见后续页。
验证结果: 请参见后续页。
验证结论: 依据对所提供样品的相关验证, 铅、汞、镉、六价铬、多溴联苯(PBBs)、多溴二苯醚(PBDEs) 和邻苯二甲酸酯(如邻苯二甲酸二丁酯 (DBP)、邻苯二甲酸丁苄酯(BBP)、邻苯二甲酸二(2-乙基己基)酯(DEHP)和邻苯二甲酸二异丁酯(DIBP))的测试结果符合欧盟RoHS指令2011/65/EU附录II修正指令(EU) 2015/863的限值要求。

通标标准技术服务(上海)有限公司
授权签名

陈皆欢

Jessica Chen 陈皆欢
批准签署人

scan to see the report



SHAEC2104523002



Unless otherwise agreed in writing, this document is issued by the Company subject to its General Conditions of Service printed overleaf, available on request or accessible at <http://www.sgs.com/en/Terms-and-Conditions.aspx> and, for electronic format documents, subject to Terms and Conditions for Electronic Documents at <http://www.sgs.com/en/Terms-and-Conditions/Terms-e-Documents.aspx>. Attention is drawn to the limitation of liability, indemnification and jurisdiction issues defined therein. Any holder of this document is advised that information contained hereon reflects the Company's findings at the time of its intervention only and within the limits of Client's instructions, if any. The Company's sole responsibility is to its Client and this document does not exonerate parties to a transaction from exercising all their rights and obligations under the transaction documents. This document cannot be reproduced except in full, without prior written approval of the Company. Any unauthorized alteration, forgery or falsification of the content or appearance of this document is unlawful and offenders may be prosecuted to the fullest extent of the law. Unless otherwise stated the results shown in this test report refer only to the sample(s) tested.

Attention: To check the authenticity of testing / inspection report & certificate, please contact us at telephone: (86-755) 8307 1443, or email: CN.Doccheck@sgs.com

SGS-CSTC Technical Services (Shanghai) Co., Ltd.
Testing Center - China Headquarter

3rd Building, No. 889 Yishan Road Xuhui District, Shanghai China 200233
中国·上海·徐汇区宜山路889号3号楼 邮编: 200233

t E&E (86-21) 61402553 f E&E (86-21) 64953679 www.sgs.com
t HL (86-21) 61402594 f HL (86-21) 61156899 e sgs.china@sgs.com

验证报告

No. SHAEC2104523002

日期: 2021年04月08日 第2页,共11页

验证方法:

1. 参考IEC 62321-2:2013, 拆分申请者提供的成品。
2. 参考IEC 62321-1:2013, 仅对本报告照片中标识的样品进行了下列测试分析。
 - (1) 参考IEC 62321-3-1: 2013, 用能量色散型X射线荧光分析仪器进行筛选
 - (2) 湿法化学测试方法
 - a. 参考IEC 62321-5:2013, 用ICP-OES测定镉的含量
 - b. 参考IEC 62321-5:2013, 用ICP-OES测定铅的含量
 - c. 参考IEC 62321-4:2013+AMD1:2017, 用ICP-OES测定汞的含量
 - d. 参考IEC 62321-7-1:2015, IEC 62321-7-2:2017 和ISO 17075-1:2017, 用紫外-可见分光光度计比色法测定六价格的含量
 - e. 参考IEC 62321-6:2015, 用GC-MS测定多溴联苯和多溴二苯醚的含量
3. 参考IEC 62321-8:2017, 用GC-MS测定邻苯二甲酸酯的含量



Unless otherwise agreed in writing, this document is issued by the Company subject to its General Conditions of Service printed overleaf, available on request or accessible at <http://www.sgs.com/en/Terms-and-Conditions.aspx> and, for electronic format documents, subject to Terms and Conditions for Electronic Documents at <http://www.sgs.com/en/Terms-and-Conditions/Terms-e-Documents.aspx>. Attention is drawn to the limitation of liability, indemnification and jurisdiction issues defined therein. Any holder of this document is advised that information contained hereon reflects the Company's findings at the time of its intervention only and within the limits of Client's instructions, if any. The Company's sole responsibility is to its Client and this document does not exonerate parties to a transaction from exercising all their rights and obligations under the transaction documents. This document cannot be reproduced except in full, without prior written approval of the Company. Any unauthorized alteration, forgery or falsification of the content or appearance of this document is unlawful and offenders may be prosecuted to the fullest extent of the law. Unless otherwise stated the results shown in this test report refer only to the sample(s) tested.

Attention: To check the authenticity of testing / inspection report & certificate, please contact us at telephone: (86-755) 8307 1443, or email: CN.Doccheck@sgs.com

SGS-CSTC (Shanghai) Technical Services Co., Ltd.
Testing Center-Chemical Laboratory

13th Building, No. 889 Yishan Road Xuhui District, Shanghai China 200233
中国·上海·徐汇区宜山路889号3号楼 邮编: 200233

t E&E (86-21) 61402553 f E&E (86-21) 64953679 www.sgs.com.cn
t HL (86-21) 61402594 f HL (86-21) 61156899 e sgs.china@sgs.com

样品编号	样品描述	限用物质	EDXRF 测试结果(1)	PHTH筛分结果(2)	化学测试结果(3) (mg/kg)	EU RoHS 结论	样品提交/再次提交日期
1	EMC3280-屏蔽盖标签上白色塑料粘纸	Pb Cd Hg Cr(VI)▼ PBBs PBDEs DBP BBP DEHP DIBP	BL BL BL BL BL BL --- --- --- ---	--- --- --- --- --- --- IN IN IN IN	--- --- --- --- --- --- ND ND ND ND	符合 符合 符合 符合 符合 符合 符合 符合 符合 符合	17 Mar 2021
2	EMC3280-银色金属屏蔽盖	Pb Cd Hg Cr(VI)▼ PBBs PBDEs DBP BBP DEHP DIBP	BL BL BL BL --- --- --- --- --- ---	--- --- --- --- --- --- --- --- --- ---	--- --- --- --- --- --- --- --- --- ---	符合 符合 符合 符合 --- --- --- --- --- ---	17 Mar 2021



Unless otherwise agreed in writing, this document is issued by the Company subject to its General Conditions of Service printed overleaf, available on request or accessible at <http://www.sgs.com/en/Terms-and-Conditions.aspx> and, for electronic format documents, subject to Terms and Conditions for Electronic Documents at <http://www.sgs.com/en/Terms-and-Conditions/Terms-e-Document.aspx>. Attention is drawn to the limitation of liability, indemnification and jurisdiction issues defined therein. Any holder of this document is advised that information contained hereon reflects the Company's findings at the time of its intervention only and within the limits of Client's instructions, if any. The Company's sole responsibility is to its Client and this document does not exonerate parties to a transaction from exercising all their rights and obligations under the transaction documents. This document cannot be reproduced except in full, without prior written approval of the Company. Any unauthorized alteration, forgery or falsification of the content or appearance of this document is unlawful and offenders may be prosecuted to the fullest extent of the law. Unless otherwise stated the results shown in this test report refer only to the sample(s) tested.

Attention: To check the authenticity of testing /inspection report & certificate, please contact us at telephone: (86-755) 8307 1443, or email: CN.Doccheck@sgs.com

SGS-CSTC (Shanghai) Technical Services (Shanghai) Co., Ltd.
Testing Center-Chemical Laboratory

3rd Building, No. 889 Yishan Road Xuhui District, Shanghai China 200233 t E&E (86-21) 61402553 f E&E (86-21) 64953679 www.sgsgroup.com.cn
中国·上海·徐汇区宜山路889号3号楼 邮编: 200233 t HL (86-21) 61402594 f HL (86-21) 61156899 e sgs.china@sgs.com

样品编号	样品描述	限用物质	EDXRF 测试结果(1)	PHTH筛分结果(2)	化学测试结果(3) (mg/kg)	EU RoHS 结论	样品提交/再次提交日期
3	EMC3280-黑色IC1本体	Pb	BL	---	---	符合	17 Mar 2021
		Cd	BL	---	---	符合	
		Hg	BL	---	---	符合	
		Cr(VI)▼	BL	---	---	符合	
		PBBs	BL	---	---	符合	
		PBDEs	BL	---	---	符合	
		DBP	---	IN	ND	符合	
		BBP	---	IN	ND	符合	
		DEHP	---	IN	ND	符合	
4	EMC3280-黑色IC2本体	Pb	BL	---	---	符合	17 Mar 2021
		Cd	BL	---	---	符合	
		Hg	BL	---	---	符合	
		Cr(VI)▼	BL	---	---	符合	
		PBBs	BL	---	---	符合	
		PBDEs	BL	---	---	符合	
		DBP	---	IN	ND	符合	
		BBP	---	IN	ND	符合	
		DEHP	---	IN	ND	符合	
DIBP	---	IN	ND	符合			



Unless otherwise agreed in writing, this document is issued by the Company subject to its General Conditions of Service printed overleaf, available on request or accessible at <http://www.sgs.com/en/Terms-and-Conditions.aspx> and, for electronic format documents, subject to Terms and Conditions for Electronic Documents at <http://www.sgs.com/en/Terms-and-Conditions/Terms-e-Documents.aspx>. Attention is drawn to the limitation of liability, indemnification and jurisdiction issues defined therein. Any holder of this document is advised that information contained hereon reflects the Company's findings at the time of its intervention only and within the limits of Client's instructions, if any. The Company's sole responsibility is to its Client and this document does not exonerate parties to a transaction from exercising all their rights and obligations under the transaction documents. This document cannot be reproduced except in full, without prior written approval of the Company. Any unauthorized alteration, forgery or falsification of the content or appearance of this document is unlawful and offenders may be prosecuted to the fullest extent of the law. Unless otherwise stated the results shown in this test report refer only to the sample(s) tested.

Attention: To check the authenticity of testing / inspection report & certificate, please contact us at telephone: (86-755) 8307 1443, or email: CN.Doccheck@sgs.com

SGS-CSTC (Shanghai) Technical Services (Shanghai) Co., Ltd.
Testing Center - Chemical Laboratory

13th Building, No. 889 Yishan Road Xuhui District, Shanghai China 200233 t E&E (86-21) 61402553 f E&E (86-21) 64953679 www.sgs.com.cn
中国·上海·徐汇区宜山路889号3号楼 邮编: 200233 t HL (86-21) 61402594 f HL (86-21) 61156899 e sgs.china@sgs.com

样品编号	样品描述	限用物质	EDXRF 测试结果(1)	PHTH筛分结果(2)	化学测试结果(3) (mg/kg)	EU RoHS 结论	样品提交/再次提交日期
5	EMC3280-银色金属焊锡	Pb	BL	---	---	符合	17 Mar 2021
		Cd	BL	---	---	符合	
		Hg	BL	---	---	符合	
		Cr(VI)▼	BL	---	---	符合	
		PBBs	---	---	---	---	
		PBDEs	---	---	---	---	
		DBP	---	---	---	---	
		BBP	---	---	---	---	
		DEHP	---	---	---	---	
		DIBP	---	---	---	---	
6	EMC3280-银色晶振本体	Pb	BL	---	---	符合	17 Mar 2021
		Cd	BL	---	---	符合	
		Hg	BL	---	---	符合	
		Cr(VI)▼	BL	---	---	符合	
		PBBs	BL	---	---	符合	
		PBDEs	BL	---	---	符合	
		DBP	---	IN	ND	符合	
		BBP	---	IN	ND	符合	
		DEHP	---	IN	ND	符合	
		DIBP	---	IN	ND	符合	



Unless otherwise agreed in writing, this document is issued by the Company subject to its General Conditions of Service printed overleaf, available on request or accessible at <http://www.sgs.com/en/Terms-and-Conditions.aspx> and, for electronic format documents, subject to Terms and Conditions for Electronic Documents at <http://www.sgs.com/en/Terms-and-Conditions/Terms-e-Documents.aspx>. Attention is drawn to the limitation of liability, indemnification and jurisdiction issues defined therein. Any holder of this document is advised that information contained hereon reflects the Company's findings at the time of its intervention only and within the limits of Client's instructions, if any. The Company's sole responsibility is to its Client and this document does not exonerate parties to a transaction from exercising all their rights and obligations under the transaction documents. This document cannot be reproduced except in full, without prior written approval of the Company. Any unauthorized alteration, forgery or falsification of the content or appearance of this document is unlawful and offenders may be prosecuted to the fullest extent of the law. Unless otherwise stated the results shown in this test report refer only to the sample(s) tested.

Attention: To check the authenticity of testing / inspection report & certificate, please contact us at telephone: (86-755) 8307 1443, or email: CN.Doccheck@sgs.com

SGS-CSTC (Shanghai) Technical Services (Shanghai) Co., Ltd.
Testing Center - Chemical Laboratory

13th Building, No. 889 Yishan Road Xuhui District, Shanghai China 200233 t E&E (86-21) 61402553 f E&E (86-21) 64953679 www.sgsgroup.com.cn
中国·上海·徐汇区宜山路889号3号楼 邮编: 200233 t HL (86-21) 61402594 f HL (86-21) 61156899 e sgs.china@sgs.com

样品编号	样品描述	限用物质	EDXRF 测试结果(1)	PHTH筛分结果(2)	化学测试结果(3) (mg/kg)	EU RoHS 结论	样品提交/再次提交日期
7	EMC3280-蓝色PCB本体	Pb	BL	---	---	符合	17 Mar 2021
		Cd	BL	---	---	符合	
		Hg	BL	---	---	符合	
		Cr(VI)▼	BL	---	---	符合	
		PBBs	IN	---	ND	符合	
		PBDEs	IN	---	ND	符合	
		DBP	---	IN	ND	符合	
		BBP	---	IN	ND	符合	
		DEHP	---	IN	ND	符合	
DIBP	---	IN	ND	符合			
8	EMC3280-附件插座上金色金属外壳	Pb	BL	---	---	符合	17 Mar 2021
		Cd	BL	---	---	符合	
		Hg	BL	---	---	符合	
		Cr(VI)▼	BL	---	---	符合	
		PBBs	---	---	---	---	
		PBDEs	---	---	---	---	
		DBP	---	---	---	---	
		BBP	---	---	---	---	
		DEHP	---	---	---	---	
DIBP	---	---	---	---			



Unless otherwise agreed in writing, this document is issued by the Company subject to its General Conditions of Service printed overleaf, available on request or accessible at <http://www.sgs.com/en/Terms-and-Conditions.aspx> and, for electronic format documents, subject to Terms and Conditions for Electronic Documents at <http://www.sgs.com/en/Terms-and-Conditions/Terms-e-Documents.aspx>. Attention is drawn to the limitation of liability, indemnification and jurisdiction issues defined therein. Any holder of this document is advised that information contained hereon reflects the Company's findings at the time of its intervention only and within the limits of Client's instructions, if any. The Company's sole responsibility is to its Client and this document does not exonerate parties to a transaction from exercising all their rights and obligations under the transaction documents. This document cannot be reproduced except in full, without prior written approval of the Company. Any unauthorized alteration, forgery or falsification of the content or appearance of this document is unlawful and offenders may be prosecuted to the fullest extent of the law. Unless otherwise stated the results shown in this test report refer only to the sample(s) tested.

Attention: To check the authenticity of testing / inspection report & certificate, please contact us at telephone: (86-755) 8307 1443, or email: CN.Doccheck@sgs.com

备注

- (1) (a) 对于限用物质是 PBBs 和 PBDEs, 其结果显示的是总 Br 含量; 限用物质是 Cr(VI), 其结果显示的是总 Cr 含量。
 (b) EDXRF 所得的测试结果只作初步筛选, 如果 EDXRF 结果超出 IEC62321-3-1:2013 所规定的警戒范围, 我们建议客户用更精确的化学测试方法测试样品, 如用 ICP-OES 测试 Cd, Pb, Hg; 用 UV-Vis 测试 Cr(VI); 用 GC-MS 测试 PBBs 和 PBDEs (单位: mg/kg)。

元素	聚合物	金属	复合材料
Cd	$BL \leq (70-3 \sigma) < X < (130+3 \sigma) \leq OL$	$BL \leq (70-3 \sigma) < X < (130+3 \sigma) \leq OL$	$LOD < X < (150+3 \sigma) \leq OL$
Pb	$BL \leq (700-3 \sigma) < X < (1300+3 \sigma) \leq OL$	$BL \leq (700-3 \sigma) < X < (1300+3 \sigma) \leq OL$	$BL \leq (500-3 \sigma) < X < (1500+3 \sigma) \leq OL$
Hg	$BL \leq (700-3 \sigma) < X < (1300+3 \sigma) \leq OL$	$BL \leq (700-3 \sigma) < X < (1300+3 \sigma) \leq OL$	$BL \leq (500-3 \sigma) < X < (1500+3 \sigma) \leq OL$
Br	$BL \leq (300-3 \sigma) < X$	--	$BL \leq (250-3 \sigma) < X$
Cr	$BL \leq (700-3 \sigma) < X$	$BL \leq (700-3 \sigma) < X$	$BL \leq (500-3 \sigma) < X$

(c) BL = 低于限度, OL = 超出限度, IN = 不确定, LOD = 检测限, -- = 未规定。

(d) 对于复合材料, XRF 筛选测试 RoHS 元素所得数据可能与样品中实际含量不同。

- (2) PHTH 筛分结果只作初步筛选, 如果测试结果超出下表所规定的警戒范围, 我们采用更精确的化学测试方法测试样品, 用 GC-MS 测试 DBP、BBP、DEHP 和 DIBP (单位: mg/kg)。

化合物	聚合物
DBP	$BL \leq 600 < X$
BBP	$BL \leq 600 < X$
DEHP	$BL \leq 600 < X$
DIBP	$BL \leq 600 < X$

(a) mg/kg = 0.0001%, MDL=方法检测限, ND =未检出(低于 MDL), --- =未检测, - = 无清单编号。

(b) 化学测试方法的表达单位和方法检测限

测试项目	Pb	Cd	Hg	DBP	BBP	DEHP	DIBP
单位	mg/kg	mg/kg	mg/kg	mg/kg	mg/kg	mg/kg	mg/kg
方法检测限	10	10	10	100	100	100	100

任何一种 PBBs 和 PBDEs 的方法检测限是 100 mg/kg;

聚合物, 复合材料和皮革样品中 Cr(VI)的方法检测限是 10 mg/kg。

金属样品中 Cr(VI)的方法检测限是 0.10µg/cm²。



Unless otherwise agreed in writing, this document is issued by the Company subject to its General Conditions of Service printed overleaf, available on request or accessible at <http://www.sgs.com/en/Terms-and-Conditions.aspx> and, for electronic format documents, subject to Terms and Conditions for Electronic Documents at <http://www.sgs.com/en/Terms-and-Conditions/Terms-e-Document.aspx>. Attention is drawn to the limitation of liability, indemnification and jurisdiction issues defined therein. Any holder of this document is advised that information contained hereon reflects the Company's findings at the time of its intervention only and within the limits of Client's instructions, if any. The Company's sole responsibility is to its Client and this document does not exonerate parties to a transaction from exercising all their rights and obligations under the transaction documents. This document cannot be reproduced except in full, without prior written approval of the Company. Any unauthorized alteration, forgery or falsification of the content or appearance of this document is unlawful and offenders may be prosecuted to the fullest extent of the law. Unless otherwise stated the results shown in this test report refer only to the sample(s) tested.

Attention: To check the authenticity of testing /inspection report & certificate, please contact us at telephone: (86-755) 8307 1443, or email: CN.Doccheck@sgs.com

(c) ▽ = 金属样品中

- a. 当六价铬的浓度高于 0.13 $\mu\text{g}/\text{cm}^2$ 时, 样品为阳性, 即含有六价铬;
- b. 当六价铬的浓度为 ND(低于 0.10 $\mu\text{g}/\text{cm}^2$)时, 样品为阴性, 即未检测到六价铬;
- c. 当六价铬的浓度介于 0.10 $\mu\text{g}/\text{cm}^2$ 与 0.13 $\mu\text{g}/\text{cm}^2$ 之间时, 无法直接判定是否检测到六价铬, 因不同个体的样品表面差异可能会影响测定结果;

由于未获知样品的存储条件和生产日期, 样品的六价铬测试结果仅能代表测试时样品含六价铬的状态。

(4) RoHS 指令中限制物质及均质材料中最大允许浓度值: Cd: 0.01%,

Pb/Hg/Cr(VI)/PBBs/PBDEs/DEHP/DBP /BBP/DIBP: 0.1%, 限值引用自 RoHS 指令(EU) 2015/863。

IEC 62321 系列等同于 EN 62321 系列

https://www.cenelec.eu/dyn/www/f?p=104:30:1742232870351101:::FSP_ORG_ID,FSP_LANG_ID:1258637,25

(5) 根据申请商申明, 型号"EMC3280"的材质与型号"EMC3280-P, EMC3280-E"的相同, 其测试结果用于替代型号"EMC3280-P, EMC3280-E"的测试结果。申请公司将承担所有的差异和风险。

除非另有说明, 此报告结果仅对测试的样品负责。本报告未经本公司书面许可, 不可部分复制。

检测报告仅用于客户科研、教学、内部质量控制、产品研发等目的, 仅供内部参考。



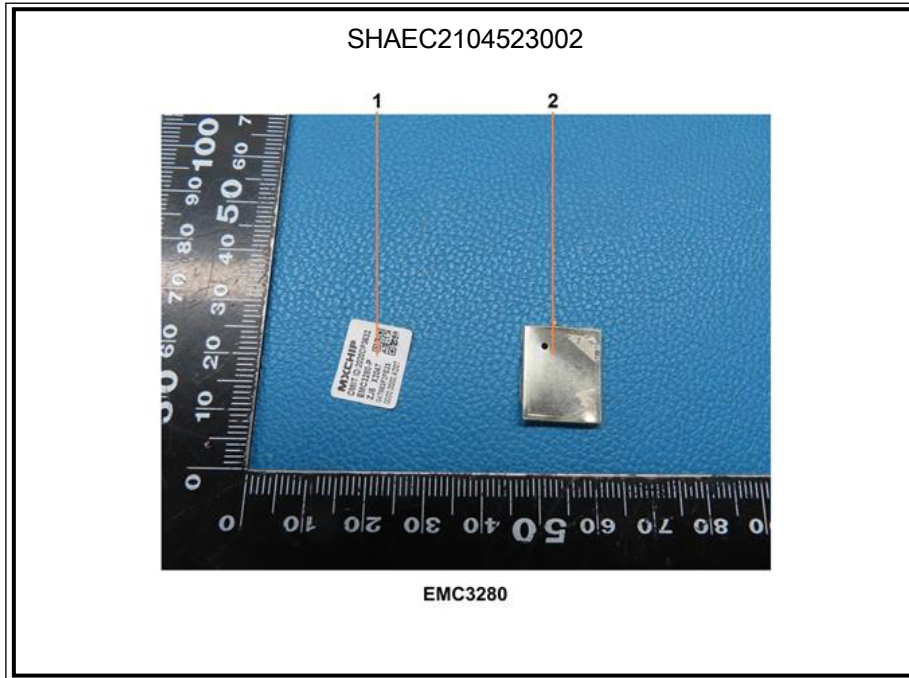
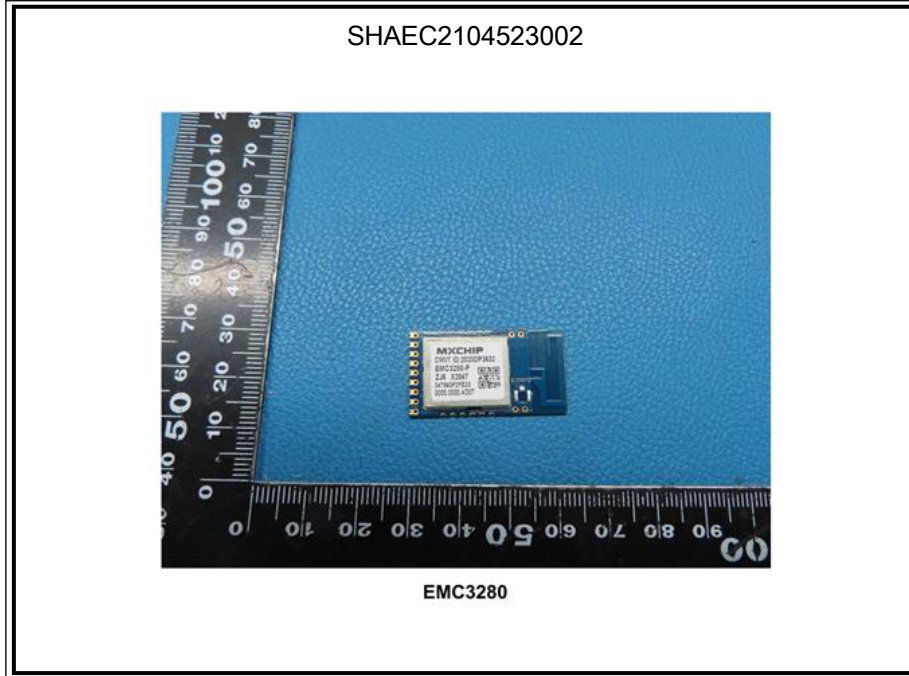
Unless otherwise agreed in writing, this document is issued by the Company subject to its General Conditions of Service printed overleaf, available on request or accessible at <http://www.sgs.com/en/Terms-and-Conditions.aspx> and, for electronic format documents, subject to Terms and Conditions for Electronic Documents at <http://www.sgs.com/en/Terms-and-Conditions/Terms-e-Documents.aspx>. Attention is drawn to the limitation of liability, indemnification and jurisdiction issues defined therein. Any holder of this document is advised that information contained hereon reflects the Company's findings at the time of its intervention only and within the limits of Client's instructions, if any. The Company's sole responsibility is to its Client and this document does not exonerate parties to a transaction from exercising all their rights and obligations under the transaction documents. This document cannot be reproduced except in full, without prior written approval of the Company. Any unauthorized alteration, forgery or falsification of the content or appearance of this document is unlawful and offenders may be prosecuted to the fullest extent of the law. Unless otherwise stated the results shown in this test report refer only to the sample(s) tested.

Attention: To check the authenticity of testing /inspection report & certificate, please contact us at telephone: (86-755) 8307 1443, or email: CN.Doccheck@sgs.com

SGS-CSTC Technical Services (Shanghai) Co., Ltd.
Testing Center-Chemical Laboratory

3rd Building, No. 889 Yishan Road Xuhui District, Shanghai China 200233 t E&E (86-21) 61402553 f E&E (86-21) 64953679 www.sgsgroup.com.cn
中国·上海·徐汇区宜山路889号3号楼 邮编: 200233 t HL (86-21) 61402594 f HL (86-21) 61156899 e sgs.china@sgs.com

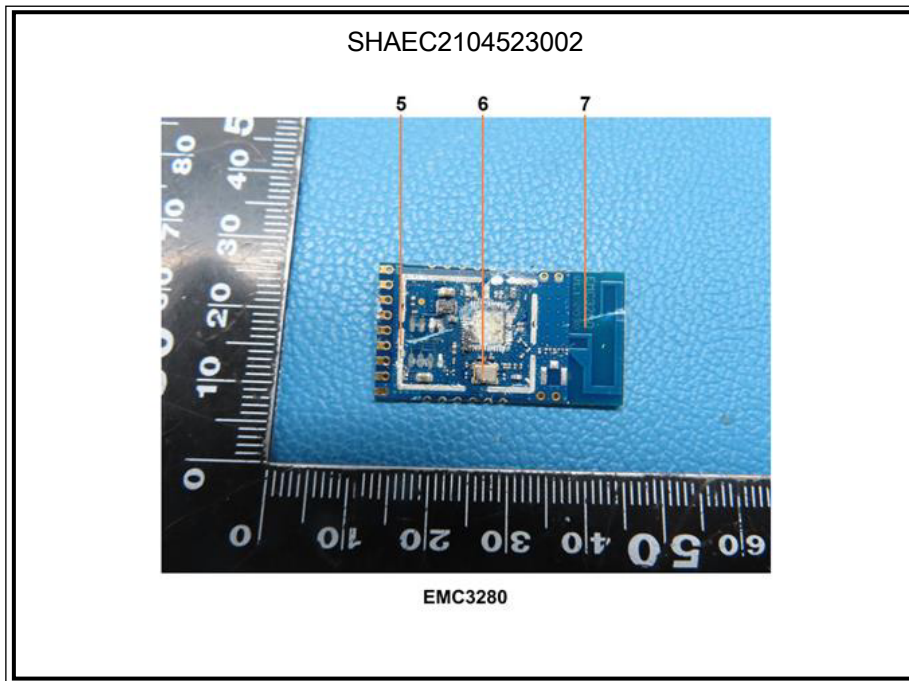
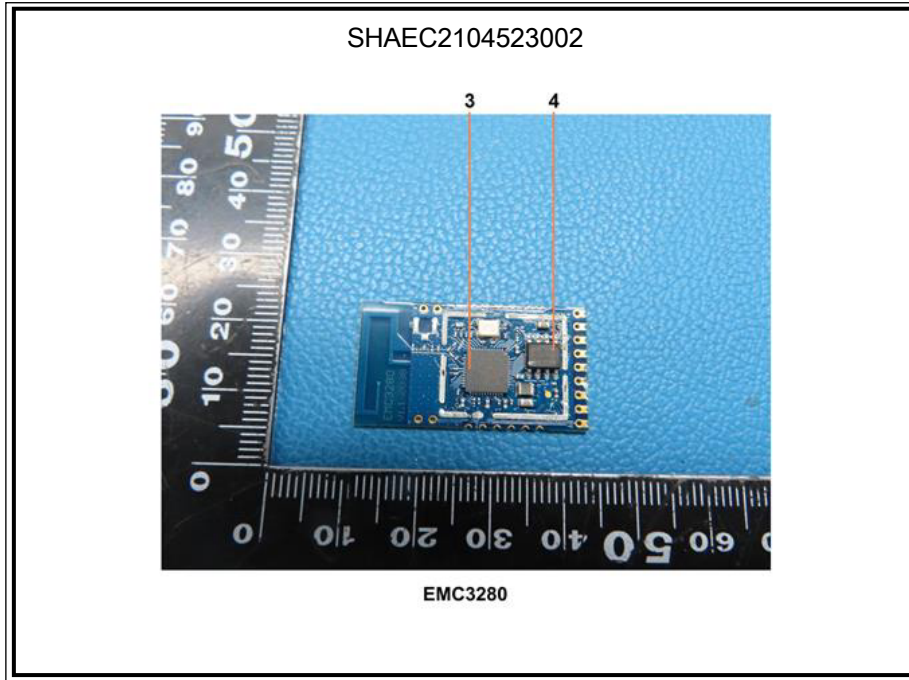
样品照片:



Unless otherwise agreed in writing, this document is issued by the Company subject to its General Conditions of Service printed overleaf, available on request or accessible at <http://www.sgs.com/en/Terms-and-Conditions.aspx> and, for electronic format documents, subject to Terms and Conditions for Electronic Documents at <http://www.sgs.com/en/Terms-and-Conditions/Terms-e-Document.aspx>. Attention is drawn to the limitation of liability, indemnification and jurisdiction issues defined therein. Any holder of this document is advised that information contained hereon reflects the Company's findings at the time of its intervention only and within the limits of Client's instructions, if any. The Company's sole responsibility is to its Client and this document does not exonerate parties to a transaction from exercising all their rights and obligations under the transaction documents. This document cannot be reproduced except in full, without prior written approval of the Company. Any unauthorized alteration, forgery or falsification of the content or appearance of this document is unlawful and offenders may be prosecuted to the fullest extent of the law. Unless otherwise stated the results shown in this test report refer only to the sample(s) tested.

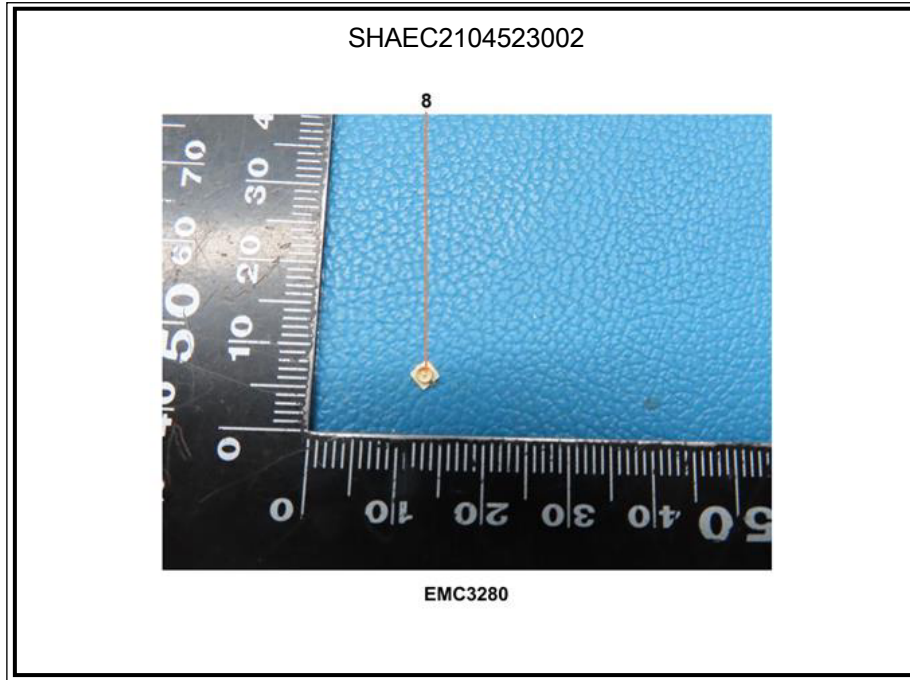
Attention: To check the authenticity of testing / inspection report & certificate, please contact us at telephone: (86-755) 8307 1443, or email: CN.Doccheck@sgs.com

13th Building, No. 889 Yishan Road Xuhui District, Shanghai China 200233 t E&E (86-21) 61402553 f E&E (86-21) 64953679 www.sgs.com.cn
 中国·上海·徐汇区宜山路889号3号楼 邮编: 200233 t HL (86-21) 61402594 f HL (86-21) 61156899 e sgs.china@sgs.com



Unless otherwise agreed in writing, this document is issued by the Company subject to its General Conditions of Service printed overleaf, available on request or accessible at <http://www.sgs.com/en/Terms-and-Conditions.aspx> and, for electronic format documents, subject to Terms and Conditions for Electronic Documents at <http://www.sgs.com/en/Terms-and-Conditions/Terms-e-Documents.aspx>. Attention is drawn to the limitation of liability, indemnification and jurisdiction issues defined therein. Any holder of this document is advised that information contained hereon reflects the Company's findings at the time of its intervention only and within the limits of Client's instructions, if any. The Company's sole responsibility is to its Client and this document does not exonerate parties to a transaction from exercising all their rights and obligations under the transaction documents. This document cannot be reproduced except in full, without prior written approval of the Company. Any unauthorized alteration, forgery or falsification of the content or appearance of this document is unlawful and offenders may be prosecuted to the fullest extent of the law. Unless otherwise stated the results shown in this test report refer only to the sample(s) tested.

Attention: To check the authenticity of testing /inspection report & certificate, please contact us at telephone: (86-755) 8307 1443, or email: CN.Doccheck@sgs.com



此照片仅限于随SGS正本报告使用

*** 报告完 ***



Unless otherwise agreed in writing, this document is issued by the Company subject to its General Conditions of Service printed overleaf, available on request or accessible at <http://www.sgs.com/en/Terms-and-Conditions.aspx> and, for electronic format documents, subject to Terms and Conditions for Electronic Documents at <http://www.sgs.com/en/Terms-and-Conditions/Terms-e-Documents.aspx>. Attention is drawn to the limitation of liability, indemnification and jurisdiction issues defined therein. Any holder of this document is advised that information contained hereon reflects the Company's findings at the time of its intervention only and within the limits of Client's instructions, if any. The Company's sole responsibility is to its Client and this document does not exonerate parties to a transaction from exercising all their rights and obligations under the transaction documents. This document cannot be reproduced except in full, without prior written approval of the Company. Any unauthorized alteration, forgery or falsification of the content or appearance of this document is unlawful and offenders may be prosecuted to the fullest extent of the law. Unless otherwise stated the results shown in this test report refer only to the sample(s) tested.

Attention: To check the authenticity of testing /inspection report & certificate, please contact us at telephone: (86-755) 8307 1443, or email: CN.Doccheck@sgs.com